

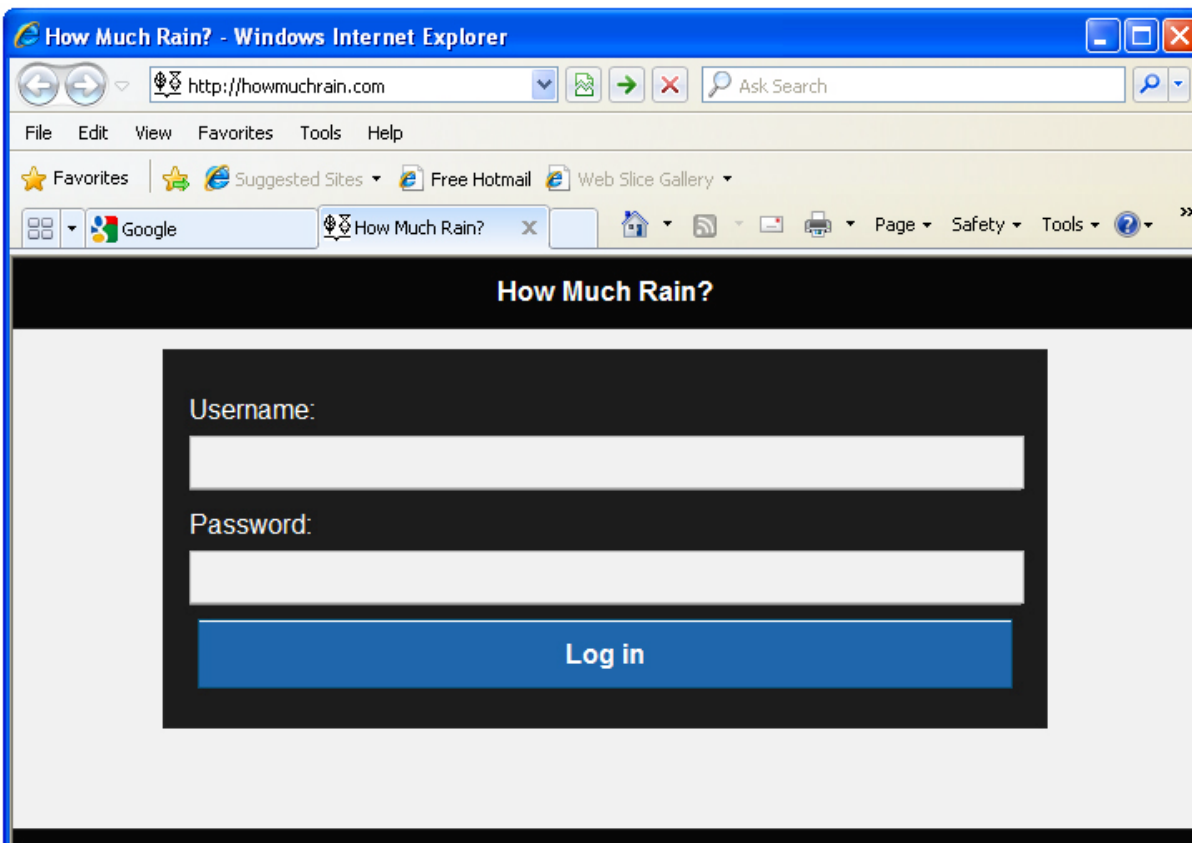
HowMuchRain.com

HowMuchRain.com is a subscription web service that allows users to “click and view” rainfall data anywhere in the continental United States. Currently, users can see estimated rainfall amounts for the last three, six, twelve, and twenty-four hours. The estimated rainfall amounts are collected from the National Oceanic and Atmospheric Administration (NOAA) from radar signatures. This data is updated hourly approximately forty minutes after the hour for which the data is recorded. Users also have access to observed rainfall amounts including the last day, last seven days, last thirty days, and the departure from normal for the last thirty days. The observed data is also collected from NOAA using a multi sensor approach. A combination of radar signatures, a network of over 10,000 rain gauges, satellite precipitation information, and long term climatologic precipitation (PRISM data) are used to produce a coverage across the entire continental US.

Users can try the service free of charge for seven days. Subscriptions can be purchased at any time for \$100.00 per year. The service is designed to work on desktop computers as well as Android and iOS (iPhone) devices. The service is available for both personal and professional uses. The subscription allows connectivity from one mobile device and one desktop/laptop. Information on using the service with each device is listed below.

Desktop Device

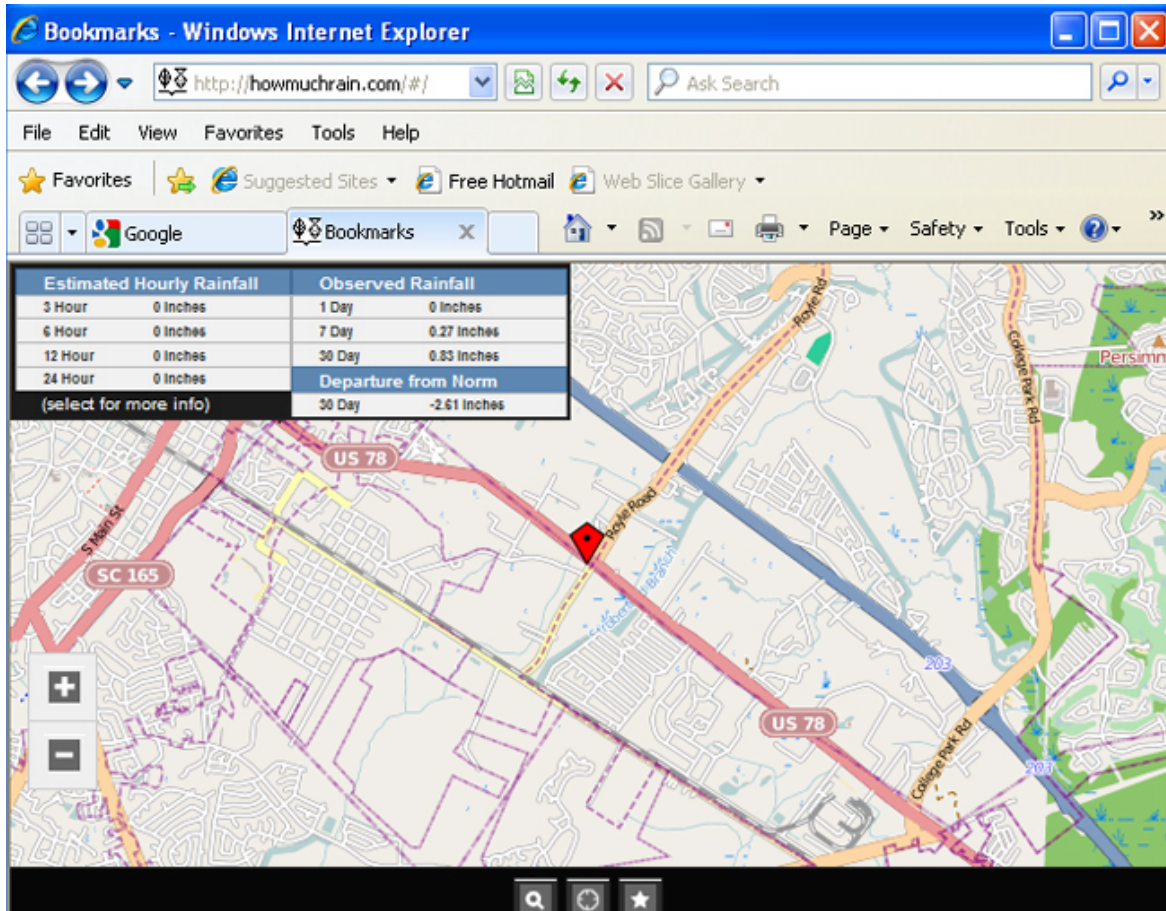
- Navigate to the service by entering site into your address bar:
<http://howmuchrain.com>



- To receive a log in, please contact our office at 843.871.5383 or email rain@sabinc.net and someone will contact you within two business days. A username and password will be supplied (case sensitive).

Using the Service

Use your mouse to pan and zoom as with most mapping applications. Click, hold, and mouse over to pan the map. To zoom, double click with the mouse on an area to zoom in. Similarly, hover your mouse over an area and use the wheel on the mouse (if equipped) to zoom in and out. The + and – icons located on the lower left hand corner of the map can also be used to zoom. To see the rainfall detail on the map, place your mouse over the area of interest and single click. A marker will appear where you clicked and a detail table will appear at the top of the screen. Click on the table to make it larger.



User tools are found across the bottom of the screen. A magnifying glass icon can be used to search by zip code or city and state. The second (middle) tool is a locate button. If your desktop supports location aware browsing, the map will pan to your area. Users can save located areas utilizing the bookmark tool. To bookmark a location, single click on the map on the location you wish to bookmark. Click the bookmark icon (star) on the bottom of the screen. A Bookmark screen will appear. Select the “+Add” tab at the top right and enter a description.

Mobile Devices

Both Android and iOS devices work with the service*. Mobile devices access the service the same as desktop devices.

- Navigate to the service by entering site into your address bar:
<http://howmuchrain.com>
- Panning and zooming works as it does with other mapping applications on your device. You can also double tap to zoom in. If you would like to use the locate tool, ensure your GPS is turned on prior to using the tool. All other functionality operates on mobile devices just as it does on the desktop.

*Currently pinch zoom and locate functions do not work on Android devices. Please check occasionally for the new functionality to be released.

Usage

The HowMuchRain.com service has obtained data from various sources. All efforts have been made to warrant the accuracy of the service. However, HowMuchRain.com disclaims all responsibility and liability for the use of the service.

To sign up for an account, please contact us at 843.871.5383 or email rain@sabinc.net.

If you need additional support/help please email rain@sabinc.net.

Frequently Asked Questions

1. How do I get a username and password?
2. What mobile devices does your service run on?
3. Why doesn't my locate function work?
4. Why isn't the pinch zoom working on my phone?
5. How many devices can I run the service from?
6. My username and password are not working, what is wrong?
7. Can I pay for one month of service to try it?
8. When I click on a location, every amount says zero, is that right?
9. Can I see how much rain there was two months ago?
10. How accurate is your data?

1. *How do I get a username and password?*

Go to <http://howmuchrain.com> and click on the "Sign Up for Service" button. You will then have the option to sign up for a demo, convert your demo account to a subscription, or purchase a new subscription.

2. *What mobile devices does your service run on?*

Currently the service runs on iOS devices (including iPhones, iTouches, and iPads) as well as Android devices. The current release has some zoom and locate functions on Android devices. The service will be upgraded automatically as additional functionality becomes available.

3. *Why doesn't my locate function work?*

Desktop browsers must support location aware browsing and mobile devices must have location services (GPS) running. The current release of the service does not support location services on Android devices. The service will be upgraded automatically as additional functionality becomes available.

4. *Why isn't the pinch zoom not working on my phone?*

Pinch zoom is only functional in iOS devices currently. The pinch zoom feature will be upgraded automatically as the functionality becomes available for Android devices.

5. *How many devices can I run the service from?*

You are allowed to run the service from two devices. Should you need additional devices to access the subscription, please contact sales at rain@sabinc.net. If more than two devices are detected using the service, the account will be flagged and notification will be sent. After the warning, the account will be blocked.

6. *My username and password are not working, what is wrong?*

In the event of your username and password not working you can email rain@sabinc.net. Please indicate the date/time it did not work as well as the device you were using.

7. *Can I pay for one month of service to try it?*

Currently, one year subscriptions are available for \$100.

8. *When I click on a location, every amount says zero or is negative, is that right?*

HowMuchRain.Com is constantly updating its data. Occasionally, you may click at the same instant that the data is being refreshed. If that should occur, please wait 30 seconds and try again. If the data still reports a zero, there may be a problem with the data from NOAA. NOAA updates the rainfall amounts as the local time approaches 10:00 am. If the data still reports a zero, please email rain@sabinc.net with the date and time as well as the location on the map.

9. *Can I see how much rain there was two months ago?*

Currently, the rainfall amounts listed in the data table are the only ones available. We are accepting feedback on additional interests as well as reporting. If you have a request, please email rain@sabinc.net.

10. *How accurate is your data?*

Our data comes directly from the National Oceanic and Atmospheric Administration (NOAA). The estimated rainfall amounts are derived from radar signatures. This data is updated hourly, approximately forty minutes after the hour for which the data is recorded. Users also have access to observed rainfall amounts including the last day, last seven days, last thirty days, and the departure from normal for the last thirty days. The observed data is also collected from NOAA using a multi sensor approach. A combination of radar signatures, a network of over 10,000 rain gauges, satellite precipitation information, and long term climatologic precipitation trends (PRISM data) are used to produce a coverage across the entire continental US. The estimated data is just that, an estimation from radar signatures and should be used as such. The observed data, derived from algorithms that use multiple sensed observations, is created and used by NOAA. It is not certified data and may have a horizontal error up to 5 kilometers. Freezing and high wind events may also skew the rainfall amounts.